

# RAT Body Language



## NEUTRAL

body is loose, back in line with the neck, ears in neutral position, eyes soft



## RELAXED

snoozing or laying down, body may be wide open



## NERVOUS

eyes wide, ears alert, back slightly hunched, mouth tightened



## HAPPY

boggling, ears are darker pink and lower on the head, relaxed lower mouth



## STARTLED, SCARED

wide eyes, ears frontal, frozen in place, ready to run, whiskers wide, tense posture



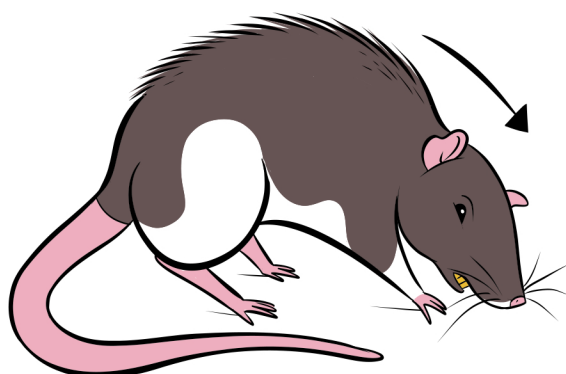
## SHUT DOWN

very scared, wide eyes (blue is visible), ears flat, hunched small body, mouth is tight



## IRRITATED

eyes slightly squinting, ears up and forward



## AGGRESSIVE

puffed up fur, arched back, lifts high on back legs, ears up and forward, teeth bared



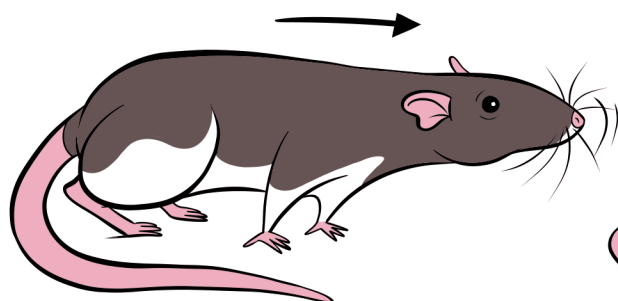
## SICK, IN PAIN

sides sucked in, eyes squinting, ears low, back arched, whiskers tight together



## ALERT

ears up, forward and twitching, eyes open softly, weight over front feet



## CAUTIOUS

head extending far in front of legs, elongated body, weight shifted ready to retreat quickly, whiskers forward, sniffing



## INVESTIGATING

curious, eyes open softly, head up